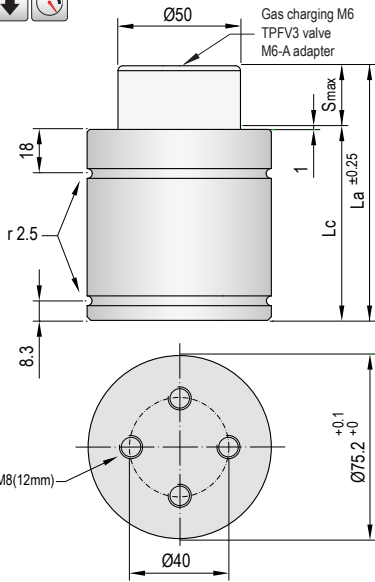


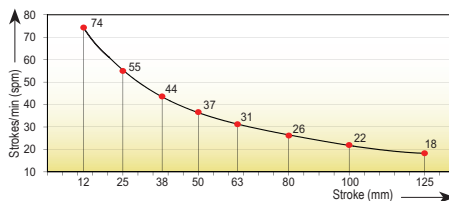
VDI SAFETY



- i** Pressure medium **Nitrogen (N₂)**
- Max. charging pressure **150 Bar**
- Min. charging pressure **35 Bar**
- Rod seal area **19,63 cm²**
- Operating temperature **0°C - 80°C**
- Force increase by temperature **0,33 %/°C**
- Max. stem speed **0,8 m/s**
- Maintenance kit **Kit CT2500**

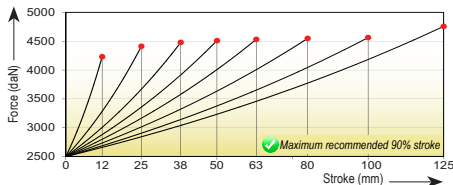


Maximum strokes / minute (at 20°C)

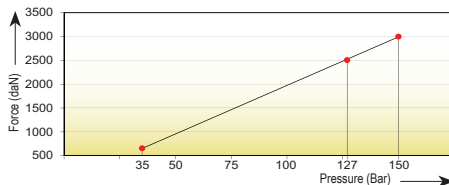


Code	Smax mm	La mm	Lc mm		Fa daN		F daN		Fc daN		P Bar	V l		Kg	
TPCT 2500x12	12	78	66	2500 ±5% (20°C)	3950		3950		4220		127 (20°C)	0,058		1,60	
TPCT 2500x25	25	104	79				4090		4400					0,113	1,90
TPCT 2500x38	38	130	92				4140		4470					0,169	2,05
TPCT 2500x50	50	154	104				4165		4500					0,220	2,30
TPCT 2500x63	63	180	117				4180		4520					0,276	2,55
TPCT 2500x80	80	214	134				4195		4540					0,349	2,95
TPCT 2500x100	100	254	154				4205		4550					0,434	3,25
TPCT 2500x125	125	304	179				4355		4745					0,517	3,70

Force/stroke ratio



Initial force/charging pressure ratio



Assembly possibilities



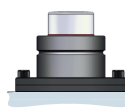
DROP-IN



SCREWS



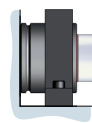
FS 75 · FSC 75



FS 75 · FSC 75



FB 75



FI 75 · FI 75/1